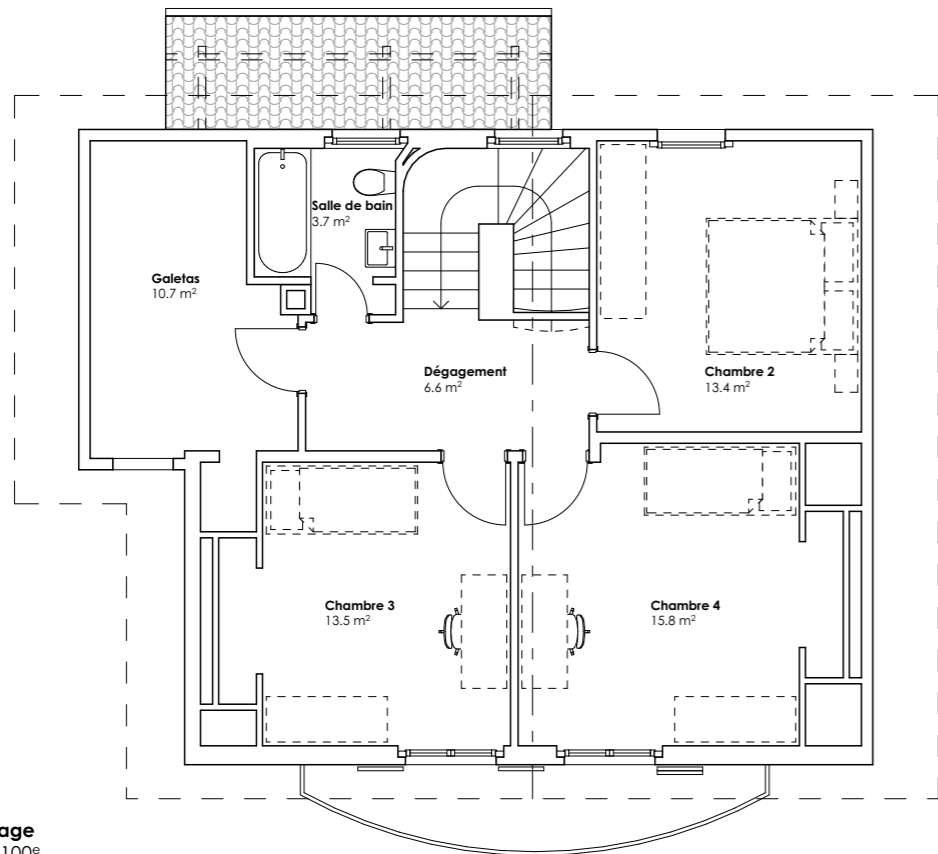
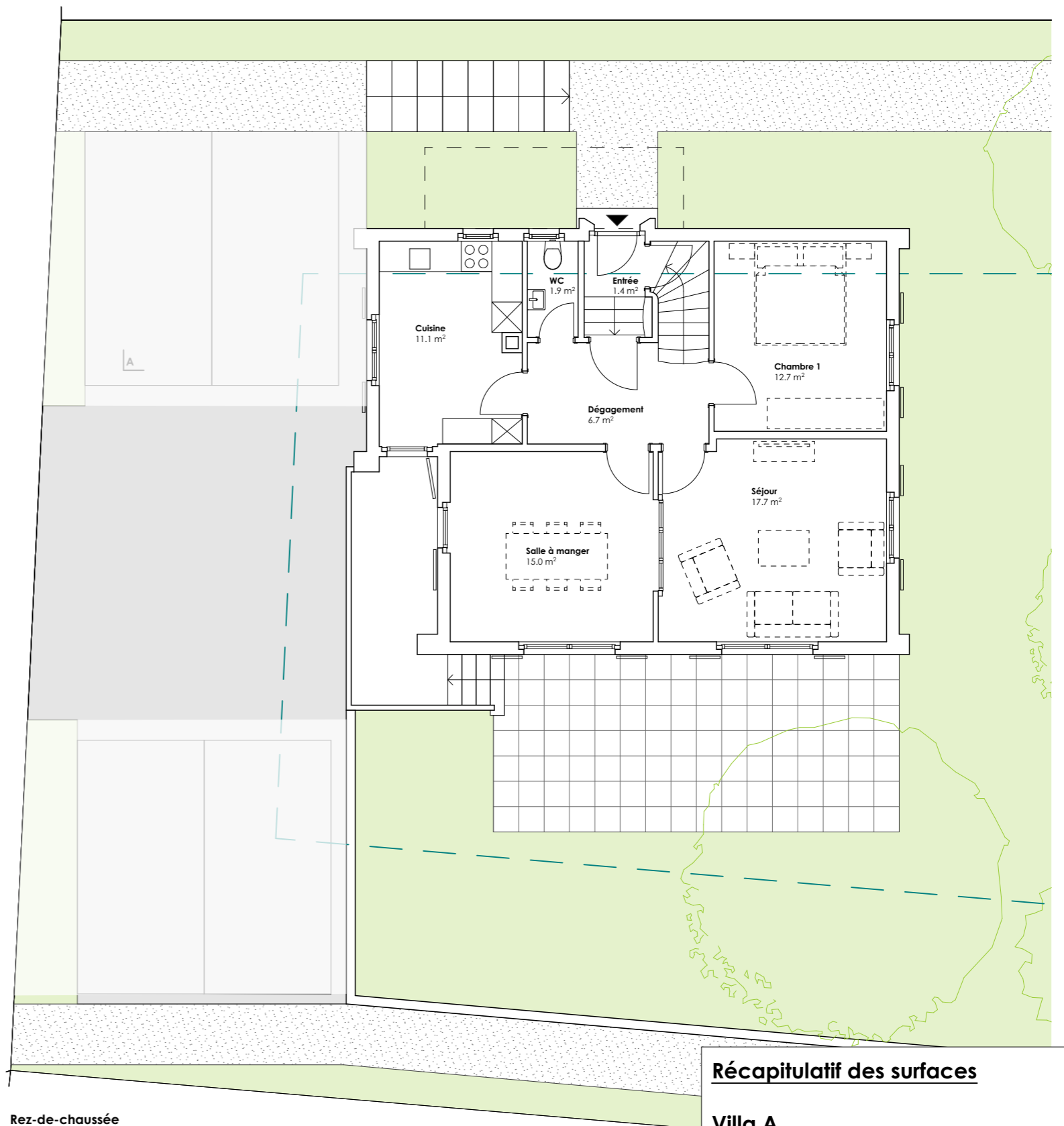


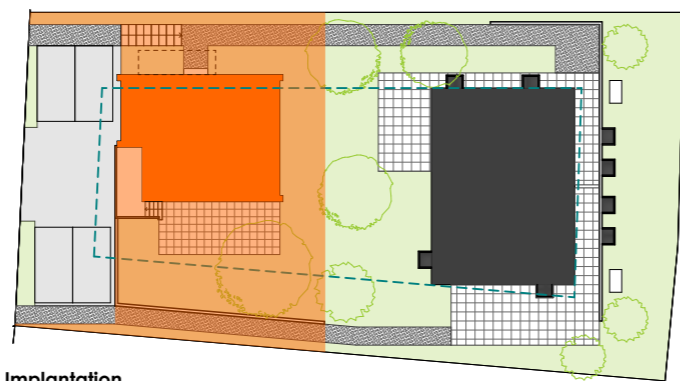
Sous-sol  
1/100<sup>e</sup>



Etage  
1/100<sup>e</sup>



Rez-de-chaussée  
1/100<sup>e</sup>



Implantation  
1/500<sup>e</sup>

### Récapitulatif des surfaces

<b>Villa A</b>		
Rez-de-chaussée	=	73 m <sup>2</sup>
Etage	=	73 m <sup>2</sup>
<b>Surfaces habitables</b>	=	<b>146 m<sup>2</sup></b>
Sous-sol	=	71 m <sup>2</sup>
<b>Surfaces non-habitable</b>	=	<b>71 m<sup>2</sup></b>
<b>Total utile</b>	=	<b>217 m<sup>2</sup></b>
Balcon rez	=	9 m <sup>2</sup>
Balcon étage	=	6 m <sup>2</sup>
Terrasse	=	48 m <sup>2</sup>
Jardin	=	122 m <sup>2</sup>

**Maillard**  
entreprise générale

Avenue de Rhodanie 46b, 1007 Lausanne  
T 021.510.50.58  
E info@maillard-architecture.ch  
W www.maillardarchitecture.com

#### OBJET

Création de 2 villas jumelles

#### ADRESSE

Rue de Montchoisi 21  
1400 YVERDON-LES-BAINS

#### PHASE

VENTE

#### PLAN

Villa A

#### SITUATION

OUEST

#### DATE

27.11.24

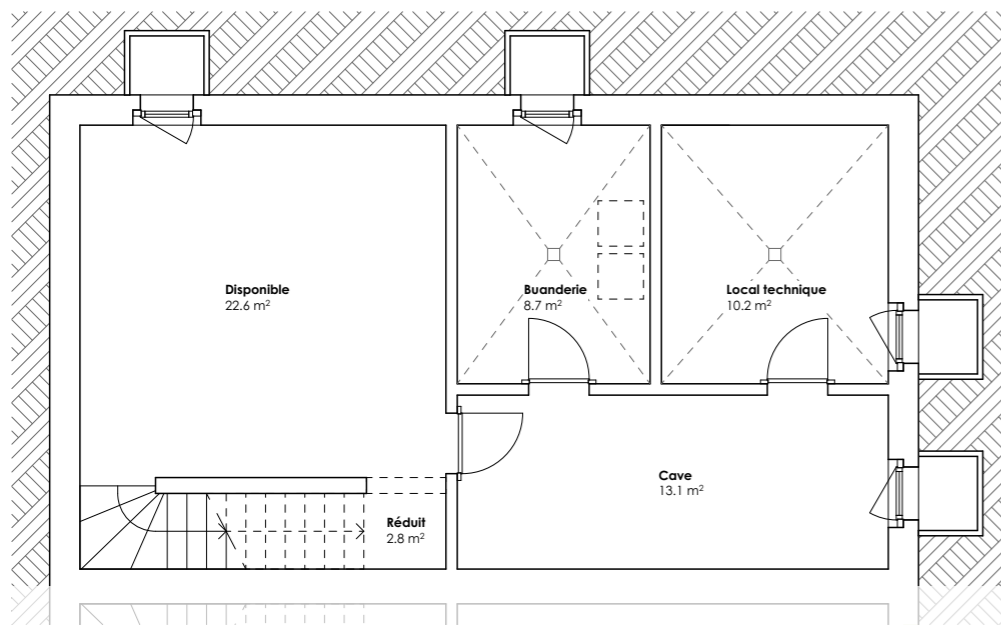
#### ECHELLE

1/100<sup>e</sup> - 1/500<sup>e</sup>

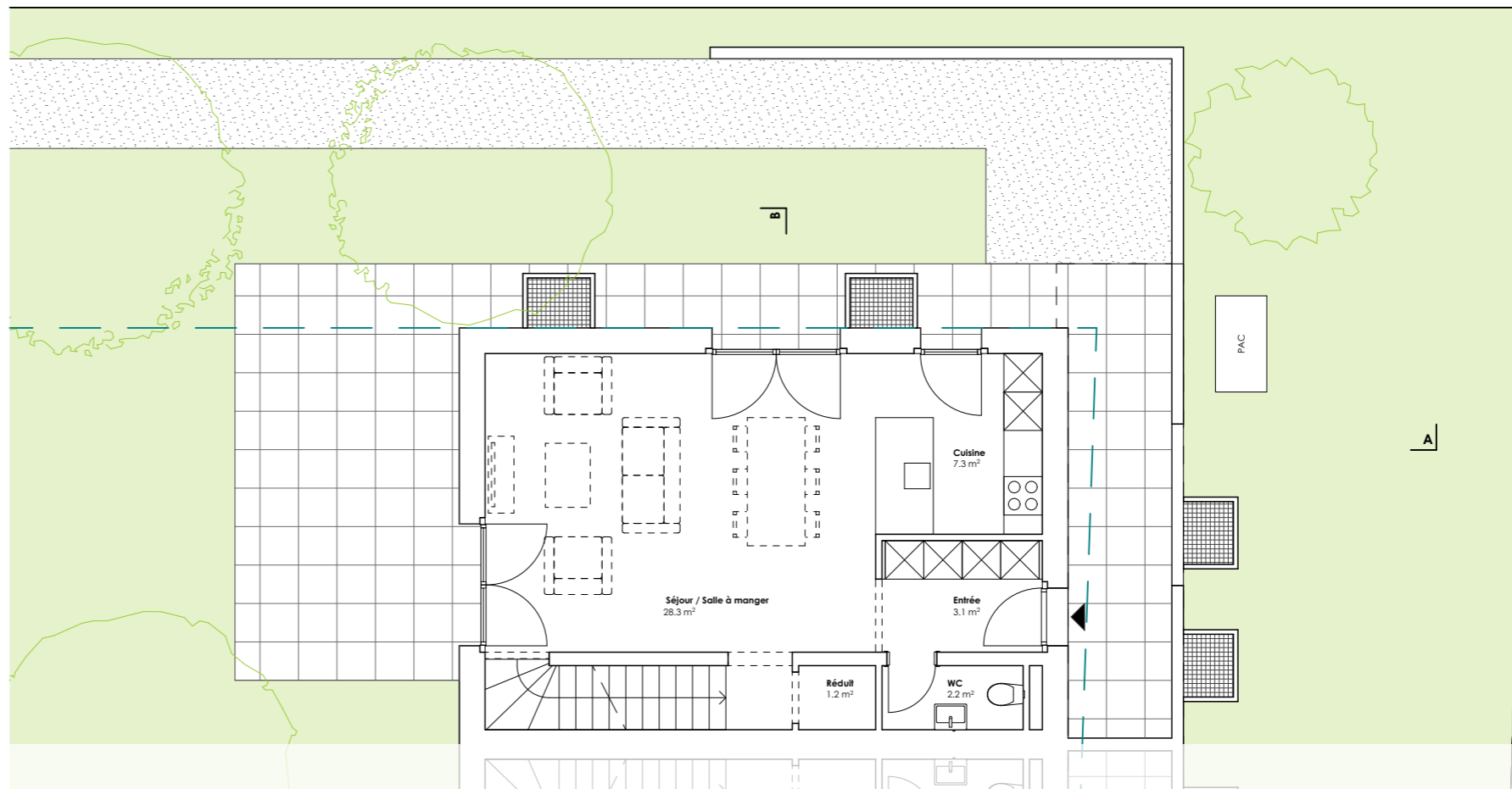
#### FORMAT

A3

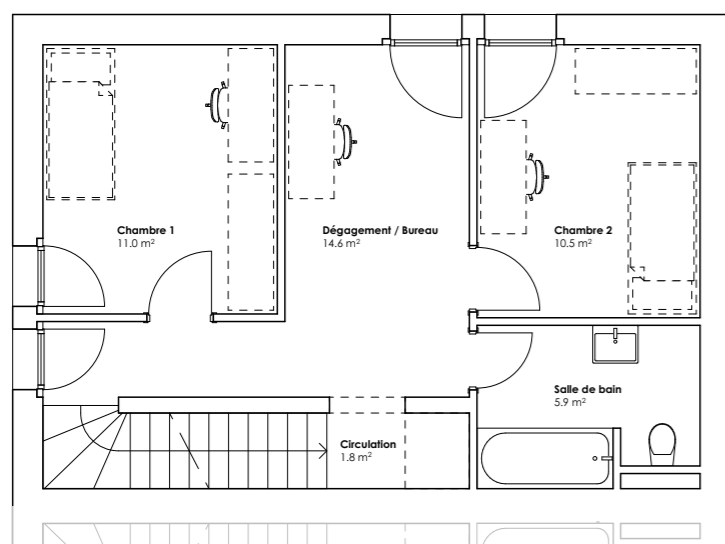




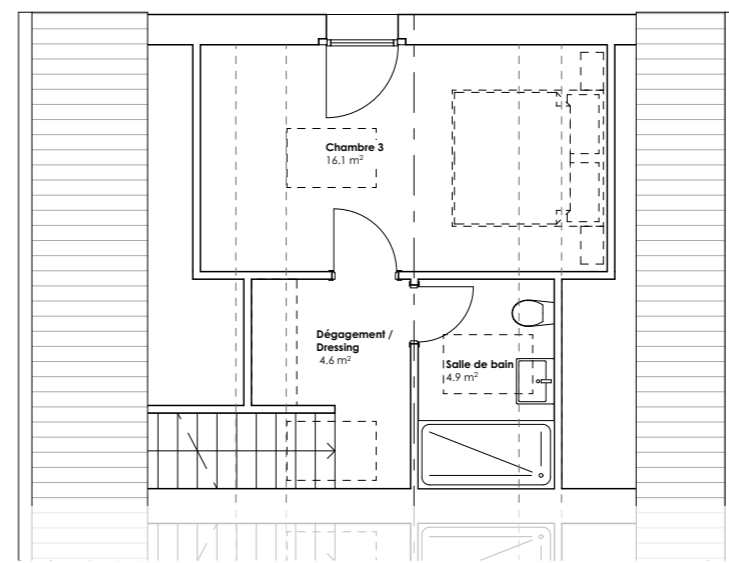
Sous-sol  
1/100<sup>e</sup>



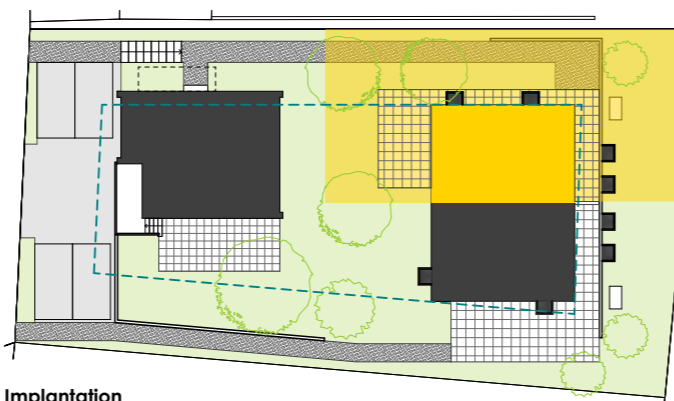
Rez-de-chaussée  
1/100<sup>e</sup>



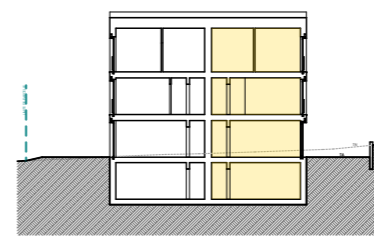
Etage  
1/100<sup>e</sup>



Combes  
1/100<sup>e</sup>



Implantation  
1/500<sup>e</sup>



Coupe B-B  
1/500<sup>e</sup>

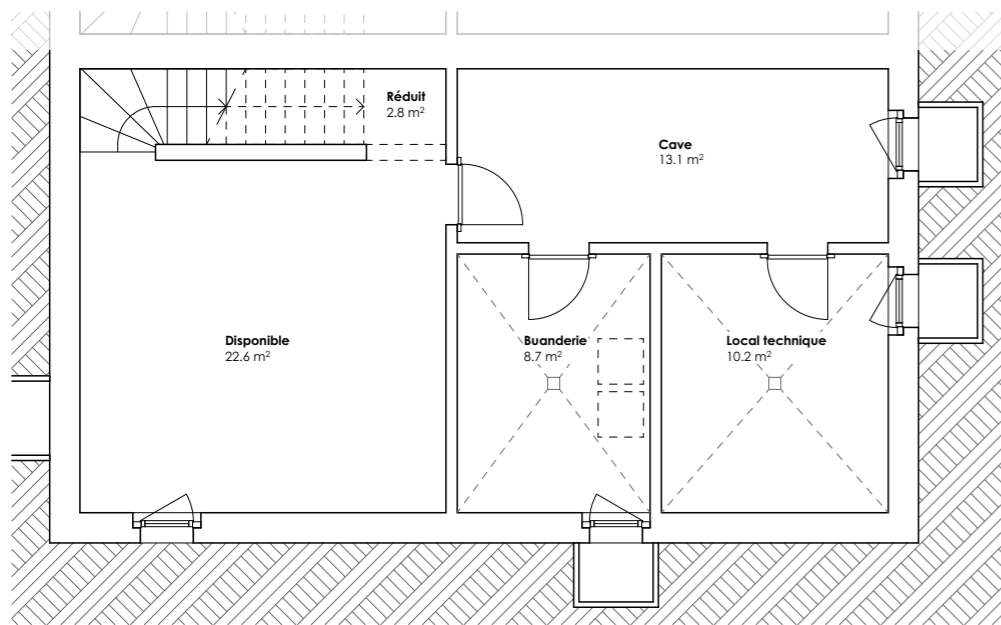
### Récapitulatif des surfaces

<b>Villa B</b>	
Rez-de-chaussée	= 51 m <sup>2</sup>
Etage	= 51 m <sup>2</sup>
Combes	= 30 m <sup>2</sup>
<b>Surfaces habitables</b>	<b>= 132 m<sup>2</sup></b>
Sous-sol	
Chauffé	= 28 m <sup>2</sup>
Non-chauffé	= 33 m <sup>2</sup>
<b>Surfaces non-habitées</b>	<b>= 61 m<sup>2</sup></b>
<b>Total utile</b>	<b>= 193 m<sup>2</sup></b>
Terrasse	= 43 m <sup>2</sup>
Jardin	= 133 m <sup>2</sup>

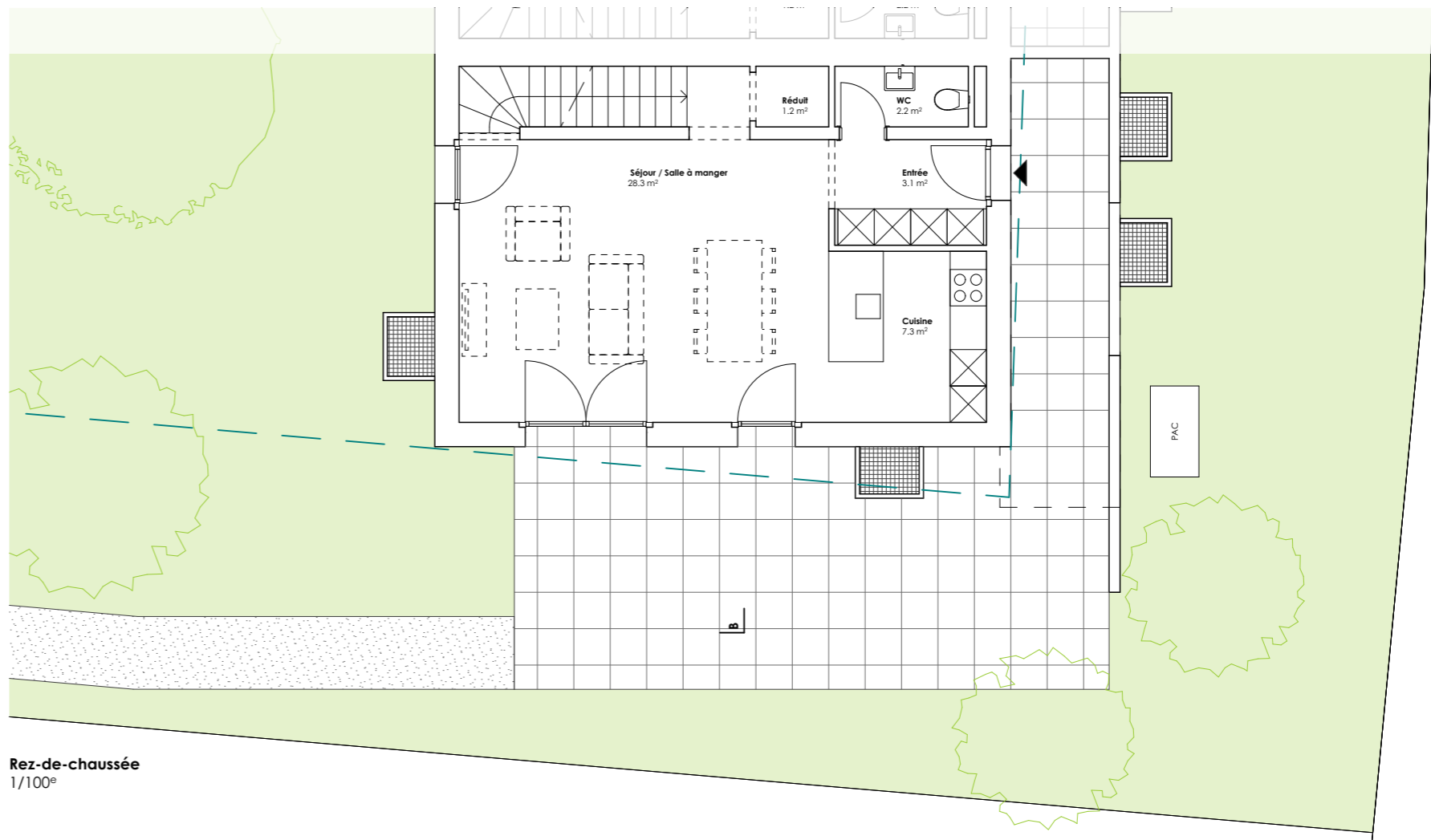
**Maillard** entreprise générale  
Avenue de Rhodanie 46b, 1007 Lausanne  
T 021.510.50.58  
E info@maillard-architecture.ch  
W www.maillardarchitecture.com

<b>OBJET</b>	<b>ADRESSE</b>	
Création de 2 villas jumelles	Rue de Montchoisi 21 1400 YVERDON-LES-BAINS	
<b>PHASE</b>	<b>PLAN</b>	<b>SITUATION</b>
VENTE	Villa B	NORD
<b>DATE</b>	<b>ECHELLE</b>	<b>FORMAT</b>
27.11.24	1/100 <sup>e</sup> - 1/500 <sup>e</sup>	A3

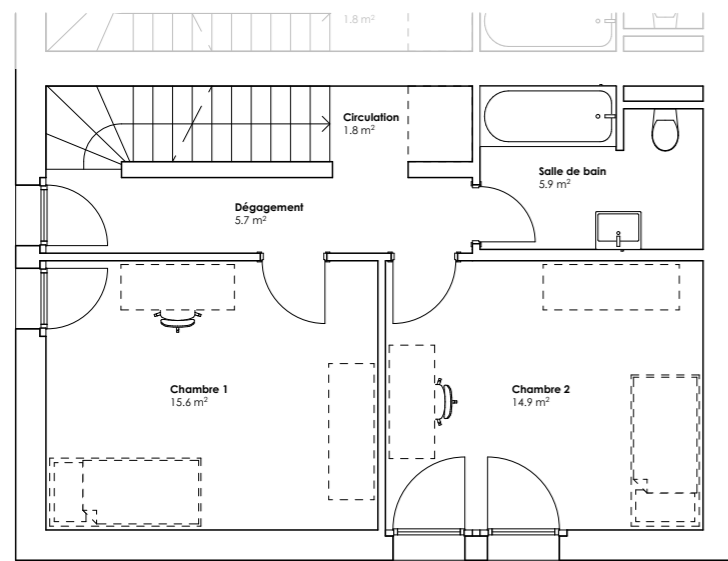




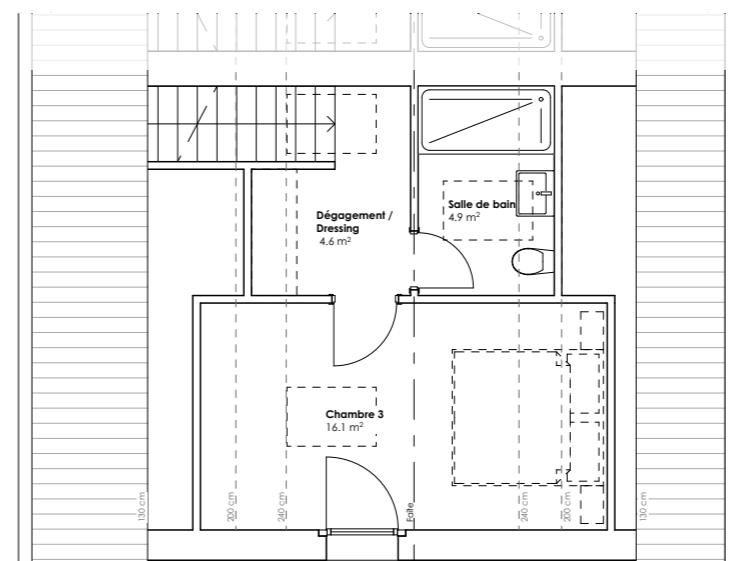
Sous-sol  
1/100<sup>e</sup>



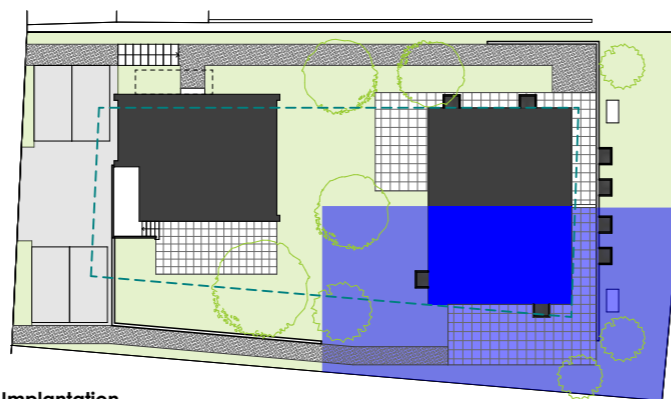
Rez-de-chaussée  
1/100<sup>e</sup>



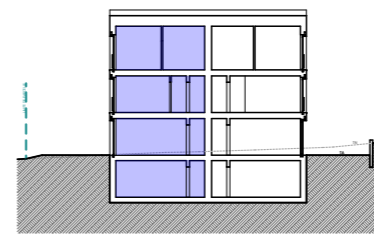
Etage  
1/100<sup>e</sup>



Combes  
1/100<sup>e</sup>



Implantation  
1/500<sup>e</sup>



Coupe B-B  
1/500<sup>e</sup>

### Récapitulatif des surfaces

<b>Villa C</b>	
Rez-de-chaussée	= 51 m <sup>2</sup>
Etage	= 51 m <sup>2</sup>
Combes	= 30 m <sup>2</sup>
<b>Surfaces habitables</b>	<b>= 132 m<sup>2</sup></b>
Sous-sol	
Chauffé	= 28 m <sup>2</sup>
Non-chauffé	= 33 m <sup>2</sup>
<b>Surfaces non-habitées</b>	<b>= 61 m<sup>2</sup></b>
<b>Total utile</b>	<b>= 193 m<sup>2</sup></b>
Terrasse	= 48 m <sup>2</sup>
Jardin	= 137 m <sup>2</sup>



Avenue de Rhodanie 46b, 1007 Lausanne  
T 021.510.50.58  
E info@maillard-architecture.ch  
W www.maillardarchitecture.com

#### OBJET

Création de 2 villas jumelles

#### ADRESSE

Rue de Montchoisi 21  
1400 YVERDON-LES-BAINS

#### PHASE

VENTE

#### PLAN

Villa C

#### SITUATION

SUD

#### DATE

27.11.24

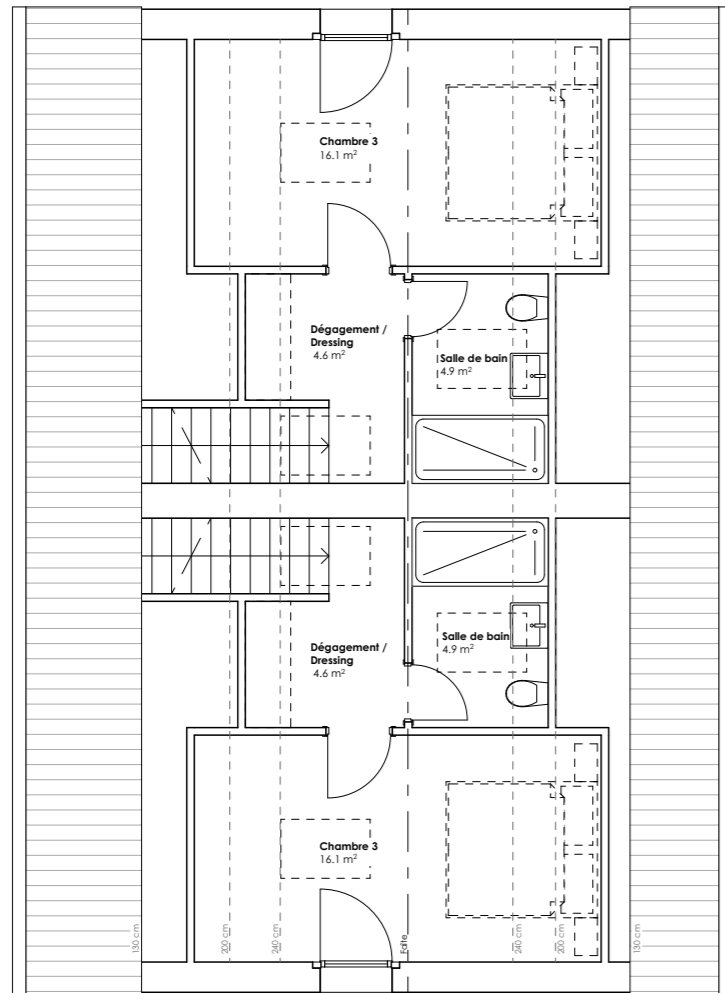
#### ECHELLE

1/100<sup>e</sup> - 1/500<sup>e</sup>

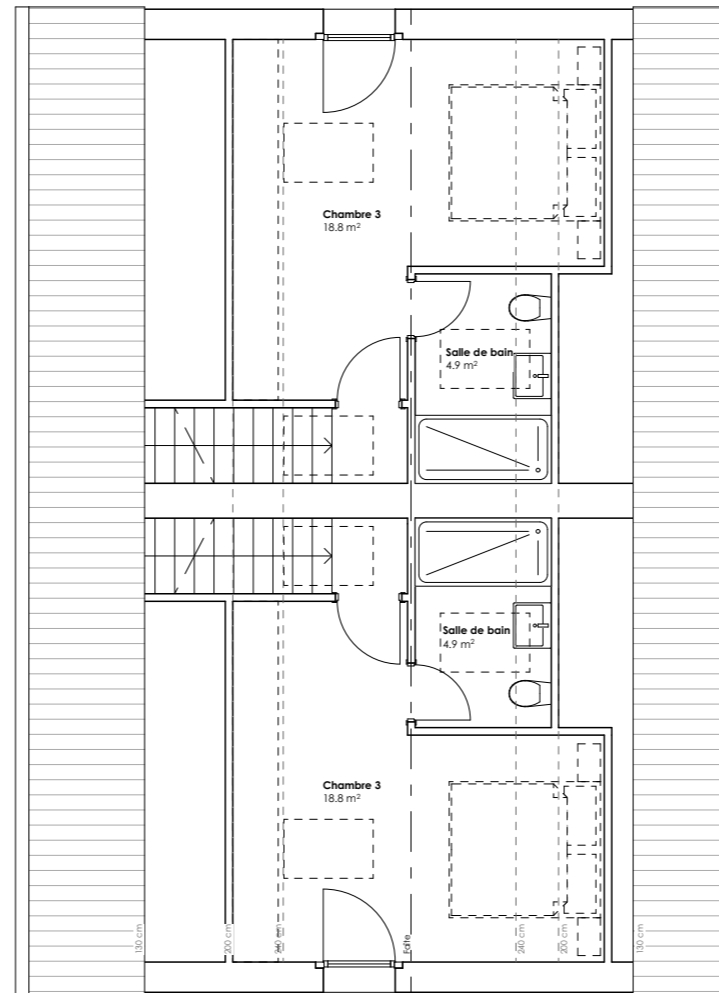
#### FORMAT

A3

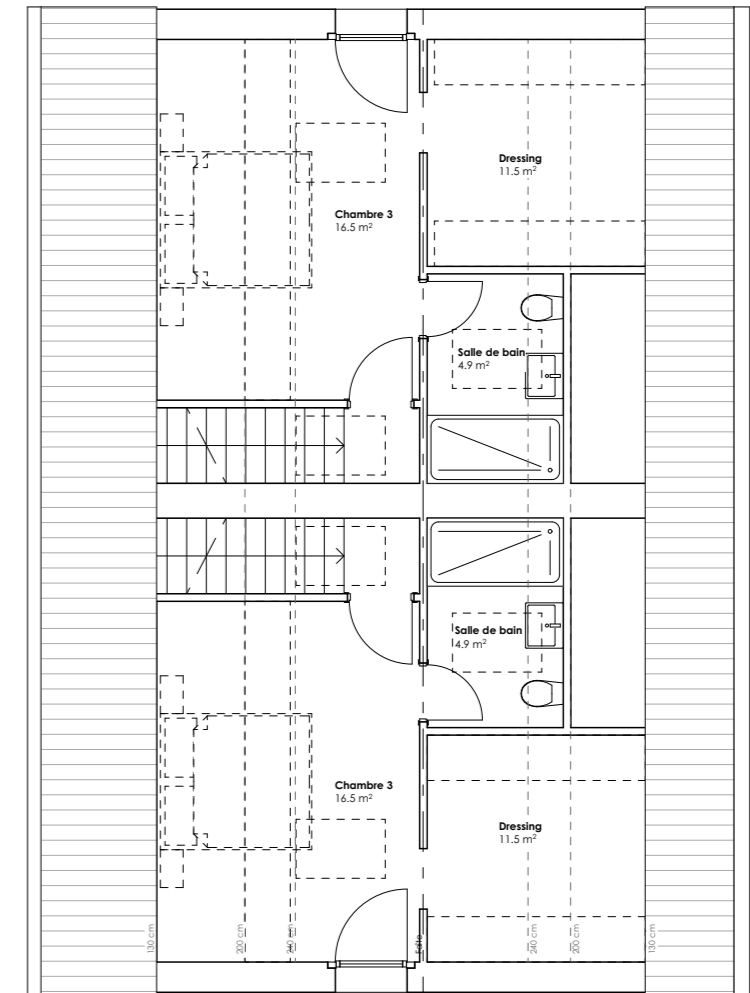




Variante n°1



Variante n°2



Variante n°3

**OBJET**

Création de 2 villas jumelles

**ADRESSE**

Rue de Montchoisi 21  
1400 YVERDON-LES-BAINS

**PHASE**

PLANS PPE

**PLAN**

Variantes chambre 3

**SITUATION**

EST

**DATE**

27.11.24

**ECHELLE**

1/100<sup>e</sup>

**FORMAT**

A3

